



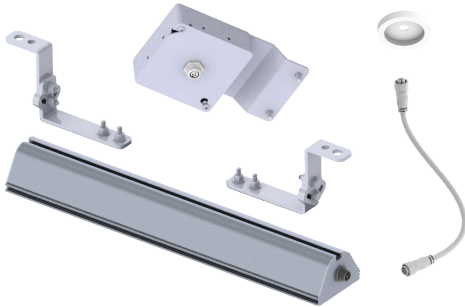
A Faster Way to Build

# Lighting Analysis Approval Form

Sent Approval form to : analysis@stellarsmart.com

Client <input type="text"/>	Structure Size <input type="text"/> X <input type="text"/>
Voltage <input type="checkbox"/> 208v <input type="checkbox"/> 240v <input type="checkbox"/> 277v	Sales Order # <input type="text"/>
<input type="checkbox"/> Standard Illumination (80fc-100fc) <input type="checkbox"/> Custom Illumination <input type="text"/> Footcandle	
BDM Name <input type="text"/>	Vestibule / Corridor Lighting <input type="checkbox"/> Yes <input type="checkbox"/> No <input type="text"/> Qty

### Direct Lighting Kit Components



### Indirect Lighting Kit Components



### ELC Control (Optional)



**Please review and approve the contents in the following packet**

Initial each page to approve its contents

Photometric (Light Analysis)

Light Control Plan

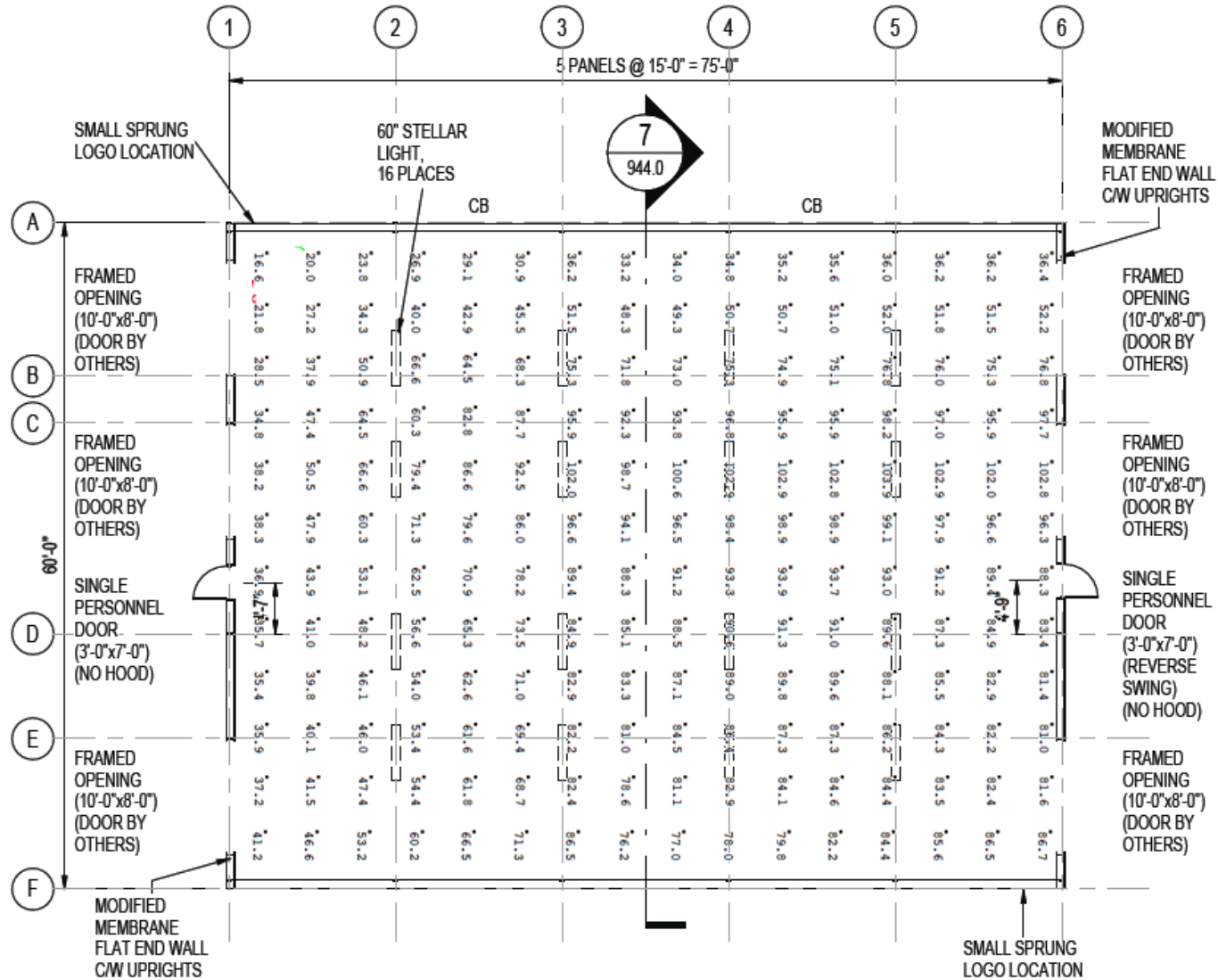
Product Order Summary

### Client Approval:

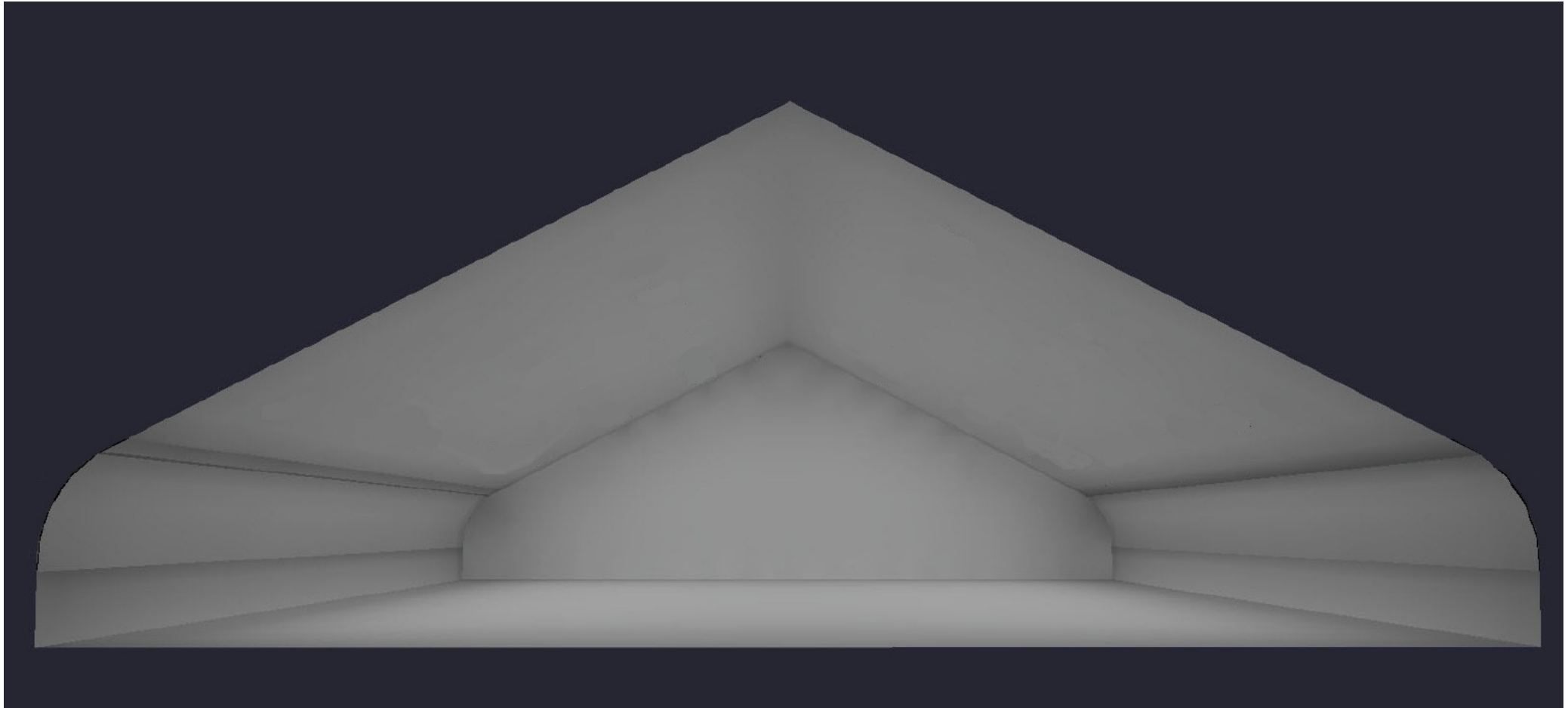
I have reviewed the contents of this packet and approve the voltage, quantities, and specifications on selected parts

Name \_\_\_\_\_ Signature \_\_\_\_\_ Date \_\_\_\_\_

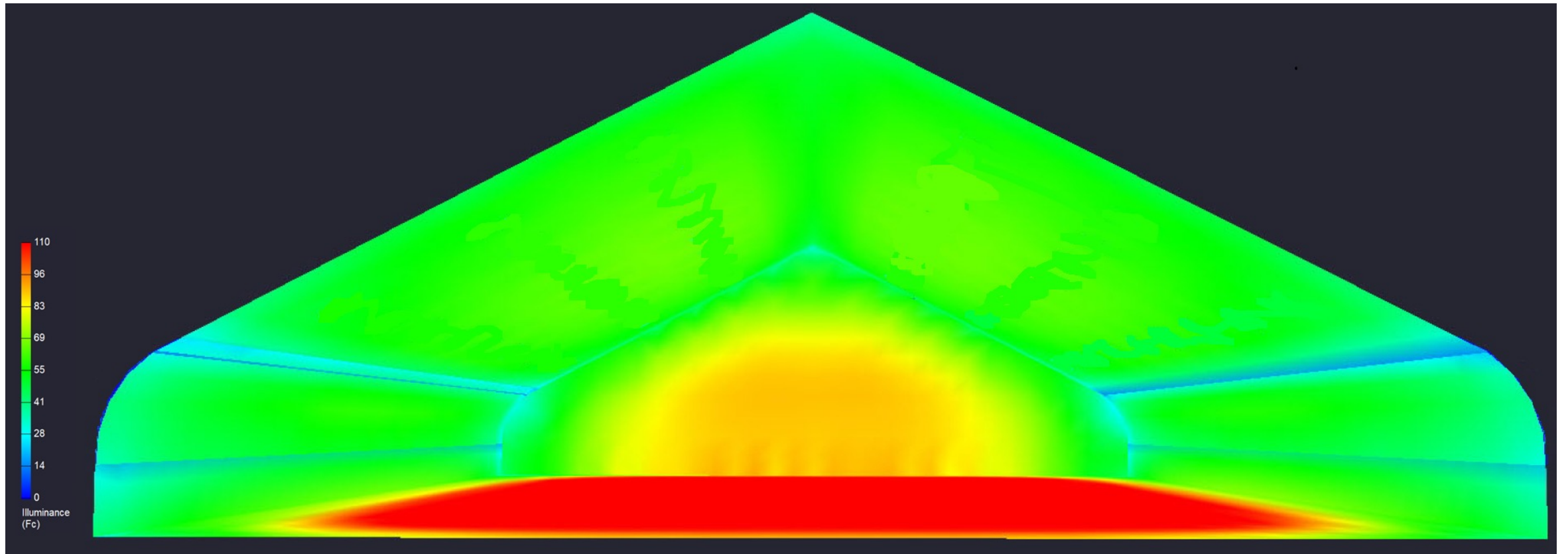
# Foot Candle Renderings



# Shadow Rendering



# Pseudo Illuminance Rendering



## Luminaire Summary

Luminaire Schedule						
Symbol	Qty	Label	Arrangement	Total Lamp Lumens	LLF	Description
	52	80L 277V	Single	N.A.	1.000	RT80L277V E4210588

## Calculation Summary

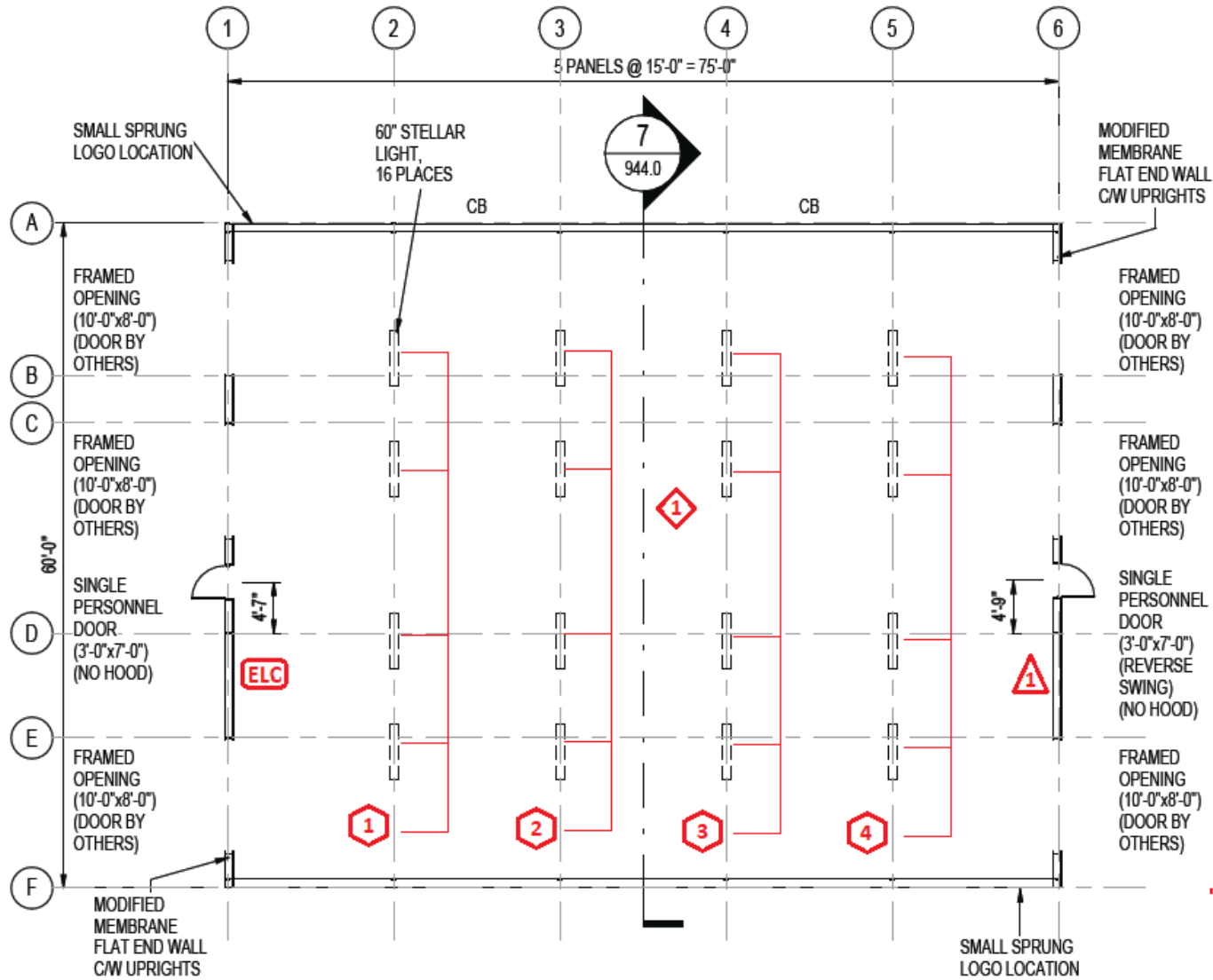
Calculation Summary							
Label	CalcType	Units	Avg	Max	Min	Avg/Min	Max/Min
Room_1_Workplane	Illuminance	Fc	74.13	105.6	16.3	4.55	6.48
RoomEst_1_Workplane	Illuminance	Fc	74.13	105.6	16.3	4.55	6.48

# Luminaire Location Summary




Coordinates In Feet

Expanded Luminaire Location Summary											
LumNo	Label	X	Y	Z	Orient	Tilt	X-Aimpt	Y-Aimpt	Z-Aimpt	TCF	
7	80L 277V	12.01	12.532	17.601	90	0	12.01	12.532	0	1	
9	80L 277V	60.007	12.532	26.037	90	0	60.007	12.532	0	1	
10	80L 277V	77.743	12.581	17.686	90	0	77.743	12.581	0	1	
11	80L 277V	30.063	24.994	26.037	90	0	30.063	24.994	0	1	
12	80L 277V	60.007	24.945	26.037	90	0	60.007	24.945	0	1	
13	80L 277V	12.01	24.945	17.601	90	0	12.01	24.945	0	1	
14	80L 277V	77.743	24.994	17.686	90	0	77.743	24.994	0	1	
15	80L 277V	30.063	37.563	26.037	90	0	30.063	37.563	0	1	
17	80L 277V	12.01	37.514	17.601	90	0	12.01	37.514	0	1	
18	80L 277V	77.743	37.563	17.686	90	0	77.743	37.563	0	1	
19	80L 277V	30.017	50.076	26.037	90	0	30.017	50.076	0	1	
20	80L 277V	59.961	50.027	26.037	90	0	59.961	50.027	0	1	
21	80L 277V	11.964	50.027	17.601	90	0	11.964	50.027	0	1	
22	80L 277V	77.697	50.076	17.686	90	0	77.697	50.076	0	1	
24	80L 277V	60.012	62.441	26.037	90	0	60.012	62.441	0	1	
25	80L 277V	12.015	62.441	17.601	90	0	12.015	62.441	0	1	
26	80L 277V	77.748	62.49	17.686	90	0	77.748	62.49	0	1	
27	80L 277V	30.039	75.02	26.037	90	0	30.039	75.02	0	1	
28	80L 277V	59.983	74.971	26.037	90	0	59.983	74.971	0	1	
29	80L 277V	11.986	74.971	17.601	90	0	11.986	74.971	0	1	
30	80L 277V	77.719	75.02	17.686	90	0	77.719	75.02	0	1	
31	80L 277V	30.194	87.434	26.037	90	0	30.194	87.434	0	1	
33	80L 277V	12.141	87.385	17.601	90	0	12.141	87.385	0	1	
34	80L 277V	77.874	87.434	17.686	90	0	77.874	87.434	0	1	
35	80L 277V	30.168	102.495	26.037	90	0	30.168	102.495	0	1	
36	80L 277V	60.112	102.446	26.037	90	0	60.112	102.446	0	1	
37	80L 277V	12.115	102.446	17.601	90	0	12.115	102.446	0	1	
38	80L 277V	77.848	102.495	17.686	90	0	77.848	102.495	0	1	
40	80L 277V	60.135	114.987	26.037	90	0	60.135	114.987	0	1	
41	80L 277V	12.138	114.987	17.601	90	0	12.138	114.987	0	1	
42	80L 277V	77.871	115.036	17.686	90	0	77.871	115.036	0	1	
43	80L 277V	30.191	127.553	26.037	90	0	30.191	127.553	0	1	
44	80L 277V	60.135	127.504	26.037	90	0	60.135	127.504	0	1	
45	80L 277V	12.138	127.504	17.601	90	0	12.138	127.504	0	1	
46	80L 277V	77.871	127.553	17.686	90	0	77.871	127.553	0	1	
47	80L 277V	30.139	140.018	26.037	90	0	30.139	140.018	0	1	
49	80L 277V	12.086	139.969	17.601	90	0	12.086	139.969	0	1	
50	80L 277V	77.819	140.018	17.686	90	0	77.819	140.018	0	1	
51	80L 277V	30.19	152.535	26.037	90	0	30.19	152.535	0	1	
52	80L 277V	60.134	152.486	26.037	90	0	60.134	152.486	0	1	
53	80L 277V	12.137	152.486	17.601	90	0	12.137	152.486	0	1	
54	80L 277V	77.87	152.535	17.686	90	0	77.87	152.535	0	1	
56	80L 277V	60.186	164.951	26.037	90	0	60.186	164.951	0	1	
57	80L 277V	12.189	164.951	17.601	90	0	12.189	164.951	0	1	
58	80L 277V	77.922	165	17.686	90	0	77.922	165	0	1	
59	80L 277V	30.19	177.517	26.037	90	0	30.19	177.517	0	1	
60	80L 277V	60.134	177.468	26.037	90	0	60.134	177.468	0	1	
61	80L 277V	12.137	177.468	17.601	90	0	12.137	177.468	0	1	
62	80L 277V	77.87	177.517	17.686	90	0	77.87	177.517	0	1	
63	80L 277V	30.138	190.086	26.037	90	0	30.138	190.086	0	1	
65	80L 277V	12.085	190.037	17.601	90	0	12.085	190.037	0	1	
66	80L 277V	77.818	190.086	17.686	90	0	77.818	190.086	0	1	

# System Control Plan



## SYMBOL SCHEDULE

-  ELC Touch Screen
-  AC Line Commuincator
-  Sensor Hub
-  Smart Switch

## CONTROL NOTES

- Turn all lights on at 07:00:00
- Turn all lights off at 22:00:00

# Parts Summary

Part Number	Description	QTY
E5210108	ELC Touch Screen	1
E5120540	Sprung AC Line Communicator	4
E5210521	SENSOR HUB	1
E5210652	Smart Switch	1

**Client Approval:** Please verify the items and quantities above and sign below

Name: \_\_\_\_\_ Signature: \_\_\_\_\_ Date: \_\_\_/\_\_\_/\_\_\_